



www.eml-eis.com



Electrical Maintenance Lusaka Ltd.

VALUE

SERVICE

QUALITY

LOYALTY

PRICE

SUPPORT



EML at a Glance

Electrical Maintenance Lusaka Ltd has had a 50 year presence in Zambia and is currently the most diverse electrical and electronic engineering company in Zambia.

EML has a strong focus on continuous improvement which is reflected in our sustained customer support, growth, referrals and stability

2017

**COMPANY
PROFILE**

Name of the Company:

Electrical Maintenance Lusaka Ltd.

Address:**Head Office**

Plot 195
Luanshya Road, East End
Off Great North End
Lusaka, 10101
Zambia

Contact Details:

+260 211 227824
+260 237014 - FAX

sales@eml-eis.com
support@eml-eis.com
buying@eml-eis.com

**website:**www.eml-eis.com

SS Factory



Contracts Department



Sales and Admin

PRODUCTS

To continue delivering high quality, state of the art products through our well established, loyal international partnerships.

MANUFACTURING

To continue to deliver superior products through our modern production facility and ensure that quality is maintained at an uncompromised high standard.

CONSTRUCTION

To continue to deliver quality electrical infrastructure on time and within budget. Our priority is to maintain the highest level of safety throughout all our company's operations.

HUMAN RESOURCES

To continue to attract, support and reward our staff while providing an environment of development and growth.

CUSTOMERS

To ensure our customers always receive the most professional and friendly service paired with the highest quality products in a fast evolving market.

HISTORY: FOUNDER AND OWNER

Mr George Narder achieved electrical and mechanical engineering qualifications in Italy following which he worked in Switzerland for 6 years. In 1963 he arrived in Zambia as part of a testing and commissioning team for the newly built Kariba Power Station and has lived in Zambia ever since.

Mr Narder started an electrical engineering business in 1965, registered as Electrical Maintenance Lusaka LTD (EML). He has managed and run the company as its CEO for more than 50 years. Under his direct entrepreneurial management, EML has grown into one of the largest and most respected electrical and electronic engineering companies in Zambia.

The company benefits from more than 60 years of his passion, knowledge and expertise.

EML is proud to have participated in many facets of the social and economic development of the country



Mr George Narder, Comm

ELECTRICAL MAINTENANCE LUSAKA (EML) MOTO

*"Always with our customers"
To continue improving on our 50 years of
reliable quality service to the Zambian industry.*

OUR VISION

We strive to remain one of Zambia's leading and most diverse electrical contracting, manufacturing, retail and training companies.

We incorporate the best available local and international innovations and technologies in our services. Partnering with world leading brands, we supply our customers with the highest quality products and after sales service.

OUR MISSION

Our added value is to provide quality products, service and training for all electrical requirements across the country, even throughout Zambia.

We are renowned for highly skilled and experienced staff capable of managing complex projects in a timely manner. We strive to continue to innovate, provide support, while adapting to our clients' needs in a rapidly evolving environment.

LUSAKA - HQ

Plot 195, Luanshya Road, East End
Off Great North Road
P.O. Box 31189, Lusaka, 10101, Zambia



KITWE COPPER BELT

Plot 1023, Eshowe Road,
P.O. Box 22612, Kitwe, 10101, Zambia



An electrical installation and services business established by Mr. George Narder in 1964 and incorporated as **Electrical Maintenance Lusaka Limited (EML)** in 1965.

EML initially focused on electrical contracting services together with maintenance, however in 1968 this was expanded to include a production facility and in the 1970's a permanent presence on the Copper Belt was secured by the registration of Electrical Instrumentation Services limited (EIS) as a sister company to EML, where Mr. and Mrs. Narder are the company majority shareholders.

Both companies continue to operate successfully in both Lusaka and the Copper Belt. The company's main business today is electrical construction, manufacturing, wholesale supply of electrical products and materials, the supply and service of state of the art healthcare equipment, the supply and installation of solar products, telephone and switchboard systems, the supply and installation of power factor correction (PFC) equipment at both LV and MV voltages and all electrical customer service and training. Today the company has a sizeable labour workforce of around 400 staff comprising professional engineers,

technicians, artisans, trainees, cable jointers, linesmen, fitters, salesmen, students, etc. and includes the factory, retail store and administration staff.

EML has successfully undertaken various electrical construction projects ranging from power plants, substations, building and industrial electrical, overhead lines, solar through to power quality projects. In addition it also maintains an installed base of over 80 medical systems at 30 clinics and hospitals, and has completed and maintains rural solar installations throughout Zambia.

EML has been active in the Healthcare Sector (diagnostic imaging and related fields) in Zambia since the late 1980's with the world class solutions of Siemens and Agfa.

“...EML also maintains an installed base of over 80 medical systems at 30 clinics and hospitals...”

In over 50 years of operation EML has employed and trained many hundreds of Zambian men and women through its ranks. Many have moved on, some have remained with the Company for over 30 years.

Returning customers have expressed their high regard for EML's commitment to quality, service and efficiency through their repeat business, referrals and recommendations to other potential clients.

EML has been active in the contracting environment in Zambia from its inception in 1965. The company engages in servicing, maintenance and major construction projects of varying magnitude and complexity. The company has seen steady growth and developed into one of the leaders of electrical construction in Zambia today.

The construction segment has a large contingent of qualified staff, plant and equipment, light, heavy and special vehicles required to successfully complete a full spectrum of electrical projects ranging from industrial, building services, substations, pump stations, overhead lines, fire systems, solar solutions, etc. EML has successfully completed over 250 large projects since 2005.

Electrical Contracting

EML has a vast portfolio of successfully completed projects including new commercial buildings, renovations, shopping malls, service stations, industrial installations, substations, overhead infrastructure, etc.

Current projects include:

Levy Business Park, Shopping Mall
Lilayi Lodge
Cancer Disease Hospital
Society House
Multichoice DSTV Head Office
Protea Lusaka Tower
BAT Housing Complex
TOYOTA Showroom and Workshop
EUREKA Park
Engen Filling Station, Longacres



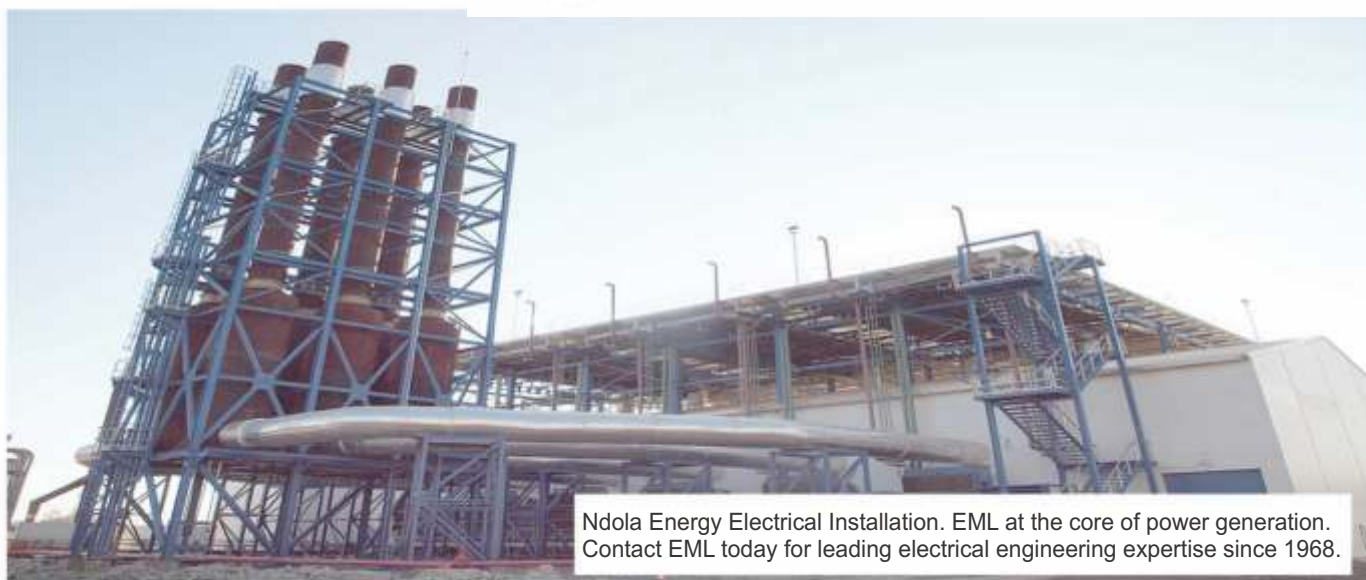
Protea Lusaka Tower



Cancer Disease Hospital



Multichoice DSTV Head Office



Ndola Energy Electrical Installation. EML at the core of power generation. Contact EML today for leading electrical engineering expertise since 1968.



Entire electrical installation at 50mw HFO power plant including 33kv / 11kv / LV and controls done by EIS.

LEVY BUSINESS PARK, SHOPPING MALL



CONTRACTING

SOCIETY HOUSE



CARGILL SOYA OIL PLANT



2015

Shoprite - Mongu
 Bokomo - Chingola
 Shoprite Chingola
 Chingola Shopping Mall
 Zambia Breweries Yeast and Ipp
 Indo Zambia Bank
 Total Retail Sites Earth Bonding
 Total Gt Sites Earth Bonding
 Stanbic Bank Ndola
 Zambia Sugar - Electrification
 Reticulation
 Manda Hill Centre
 K. P. T. F.
 Total Maintenance
 Rishaba Investments Limited
 Lilayi Properties Limited
 Shoprite Ndola
 Engen Buseko
 Engen Chelston
 Kobil
 Mr. Dudhia
 Engen Chawama
 Stanbic Pamodzi
 Lusaka Stock Exchange
 Bank of Zambia - 7th Floor
 Malting Plant - Zambian Breweries
 Protea Ndola
 Barley Malting Plant
 Hitachi Construction Phase 2
 Garden City Shopping Mall
 E.F.C. - Pulse Financial Services
 Mainstreet Office Block
 Wimpy & Corner Bakery - Engen Kitwe
 Penmarks Showroom

2014

New Boutique Hotel
 Yukon Estate Housing Makeni
 Total Solwezi 'A'
 Housing Unit at Roma Park
 South View External Works
 Euxton Agriculture Limited
 Zambia Sugar Plc - Phase 1
 Engen Petroleum - Luanshya
 Total Maintenance
 Total Kalumbila (Fqm) Service Station
 Engen Mufulira Service Station
 Chingola Hub Project
 Renovation of House on Plot 15C
 Middle Way
 Limeco Ltd Zambia

Total Depot - Lusaka
 Shoprite Chililabombwe
 Circle Transtra International
 Bank of Zambia - 7th Floor
 Rekays Shopping Centre
 Toyota Zambia - Nangwenye
 Toyota Zambia - Copperbelt
 Akay Plastics Factory
 Investrust Bank Plc. Freedomway
 Nampak Ndola
 National Breweries
 Total Solwezi A
 T.Z.A.M.
 New District Hospital Matero
 Pick n Pay Unza
 Mr Yazaumeid's Residence
 Catholic Diocese Phase 2 Ndola
 Shoprite Kapiri Mposhi
 Baobab College
 Arcades Development
 Total Solwezi Airport
 Church of Jesus Christ L.D.S.
 Action Auto Lusaka
 Engen Kitwe - Depot
 Bank of Zambia - Annex
 Pick n Pay Society House
 Food Lovers - Umza
 Puma Energy Zambia Plc
 Boxmore Plastic Warehouse
 Mri Seed Syngenta Small Farm
 Stanbic Bank Cairo Rd.
 Makoli Apartments
 Bridge Shipping Office & Warehouse
 Office Block for Mr. Laurence Matibini

2013

Unified Chemicals Limited
 Total Kansanshi Fuel Depot
 Ndola Catholic Diocese - Ndola
 Investrust Bank - Buteko, Ndola
 Investrust Bank Z - Mart, Ndola
 Total Maintenance
 Protea Hotel
 Lumwana Mine
 Kings Chemicals Ltd
 Stanbic Bank Industrial Branch
 Shoprite Kitwe
 Wood Processing Industries
 Kenyan High Commission
 South Gate Investment
 Mamco Office Block

Zanaco Data Centre Main Panel
 Office Block for Saturnia Pension Trust
 Fund
 Saro Agri - Workshop and Warehouse
 African Milling Company
 International Bus Terminus in Livingstone
 Plastic Factory - Lighting
 Plastic Factory - Machines
 Barloworld Equipment Zambia Limited
 Freedom Park Shopping Mall - Kitwe
 Bokomo Farm
 Kalumbila Mine
 International Commercial Bank

2012

Total Maintenance
 Investrust Bank - Levy Park Branch
 A.M. Motors
 Eureka Business Park - Farmers House
 Zanaco Head Office - Archives
 Toyota Zambia - Lusaka
 Standard Chartered Bank - Ndola
 Verino Agro - Industries Ltd
 Kcm Offices - Abacus
 African Oil Mall
 Zambia Centre for Accountancy Studies
 Vijayvargiya House
 Nampak Md's Residence
 British Council Head Office
 Citi Bank
 Jica Zambia Office
 Engen Longacres Service Station
 Society House
 Lilayi Lodge
 Barclays Bank - Kafue House
 New Stanbic Bank Branch - Ndola
 Cancer Disease Hospital Phase II
 Stanbic Bank Branch - Chambishi
 Standard Chart. Bank Branch - Levy Park
 Nampak Zambia Ltd
 Dulux Zambia Ltd
 Tak Pamodzi Hotel - Lusaka
 Zanaco Head Office - 2nd Floor
 Zamanita
 Net One Data Centre - Roma
 Stan Chart. Bank - Arcades, Chilenje &
 Makeni
 Society House - Electrical Works Ht
 Chipata Shoprite Checkers
 Hungry Lion - Ndola
 Society for Family Health
 Shoprite Luanshya

2011

Engen petroleum - New Industrial F/Station
Zambia National Service - Chamba Valley
Dwelling House
Multichoice Head Office
Total Maintenance
Saro Agri - Md's Residence
L.M. Engineering Ltd
BP Zambia Limited - Ndola Airport
Lusaka Water and Sewerage Co. Ltd
Chongwe District Council
Miracle Life Family Church - Genset
Zanaco Old Head Office Building
Bank of Zambia
Total Zambia - Warehouse
Barloworld - Kitwe
Hitach Construction Ltd
Shakespeare Court Com
Stanbic Bank (Z) Limited - Kabwe
Prinx Park
Kings Chemicals Ltd - Great North Road

African Food Products
Zanaco (New) - Unza Branch
Intermarket - Cairo Road
Indo - Zambia Bank - Chandwe
Musonda Road
Nampak Zambia Ltd - Ndola
Livingstone Shoprite Checkers
Barclays Bank - Kitwe
Total Solwezi
Hungry Lion - Livingstone
Mugg and Bean
Madson and General Insurance

2010

Zanaco Head Office
Livingstone Shoprite
Coppernet Solutions - Kitwe
Total Maintenance
Cancer Disease Hospital - Lusaka
Toyota Zambia - Kitwe
Lilayi Housing - J.J. Lowe
Dariyaye Milling Ltd - Maize Mill
Krimanvi Properties
Nestle (Z) Trading Ltd
Investrust Bank - Chirundu Branch
African Banking Corporation - Kitwe
Royal Netherlands Embassy

Shoprite Checkers - Hungry Lion - Manda Hill
Cavmont Capital Bank - Kitwe
African Banking Corporation - Ndola
Eureka Retail Park - Kafue Road
Standard Chartered Bank - Main Branch
Levy Business Park
Shoprite Checkers - Mazabuka
Standard Chartered Bank - Buteko - Ndola
Electrical Techniques Ltd
Kabulonga Bakery - Lusaka
National Highway Engen Filling Station

2009

Saturnia Regina Trust
Shoprite Checkers
Ambro Limited
Zambia National Commercial Bank
Stanbic Bank (Zambia) Ltd.
Bay Port Financial Services Limited
Pestalozzi, Lusaka
Ministry of Education
Nampak (Zambia) Limited
MTN (Zambia) Limited
National Olympic Committee
Grain Storage Solutions Limited
Zambia Bureau of Standards
Miracle of Life Ministries
Zambia State Insurance Corporation
Intermarket Banking Corporation
German Embassy, Lusaka
Taj Pamodzi Hotel Plc
Progressive Poultry Limited, Lusaka
Total Petroleum (Zambia) Limited
United Bank of Africa Limited
Africa Milling Company
CK Outdoor Advertising (Zambia) Ltd
University of Zambia

2008

Engen (Z) Ltd
Pesttalozzi Zambia Limited
Saturna Regina Pension Trust Fund
Shoprite Checkers
National Institute of Public Admin.
Eastland Developers
Barclays Bank Plc
Atlascopco (Zambia) Limited
Bayport Financial Services
Stanbic Bank (Z) Ltd
North Atlantic Engineering Consultants
Nampak (Zambia)

2007

South Gate Ltd
Shoprite Checkers
Total Petroleum (Zambia) Ltd
Spar (Zambia) Ltd
Total (Zambia) Ltd
M. A. Milling Company
Barclays Bank Plc
Engen (Z) Ltd
Lenco Grain Silos
Intercontinental Hotel

2006

Velos
Mukango Construction
Spar Soweto
Norwegian Embassy
Stanbic Bank (Z) Ltd
Saro Agri Equipment
Shoprite Checkers - Lusaka
Millers Construction
Royal Netherlands Embassy
Finance Bank (Z) Ltd
Barclays Bank (Z) Plc
American Embassy
Millers Construction
Total (Z) Ltd
African Milling Co. Ltd
Bank of Zambia
Germany Technical Cooperation
Spar (Zambia) Ltd

2005

Norwegian Embassy
Yangts Jiang Enterprises
Stanbic (Z) Ltd
Johnken States - Chisamba
Total (Z) Ltd
Dunavant Oil (Z) Ltd
China Jiangxi Enterprises
American Embassy
Barclays Bank (Z) Ltd
Standard Chartered Bank

We have our own fleet of specialised vehicles to cater any type of electrical contracts

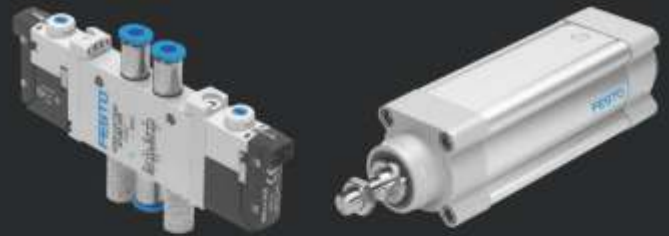


Instrumentation and Control

EML is an authorised distributor of many leading brands, with qualified and experienced service and installation staff in both Lusaka and Kitwe.

FESTO

A worldwide leading supplier of pneumatic and electrical automation technology. Offering a wide range of quality industrial, process automation, components and solutions.



SICK

One of the world's leading producers of quality sensors and sensor solutions for all industrial applications.

RETAIL

FLUKE

From industrial electronic installation, maintenance and service, to precision measurement and quality control, Fluke tools help keep business and industry around the globe up and running.



WIKAI

Supplier of Wika quality products including pressure and temperature gauges, industrial accessories and measuring equipment.



Since 1968, **Sterling Steel Factory** has been an integral part of EML's core structure.

We manufacture panels, feeder pillars and distribution boards for an extensive range of applications to supply the contracting and maintenance departments.

Sterling Steel Factory is EML's main supplier of industrial and domestic light fittings.

Many of these items are on display in our head office and regional sales departments for clients to view and make enquiries.

The products manufactured at our Sterling Steel Factory meet the highest international standards of quality and finishes.



EML offers a complete and flexible approach to designing and manufacture, thus ensuring a timely completion to customer's diverse electrical needs.

We operate computerised CAD/CAM systems to aid and enhance both the design and individuality of each project to suit any particular requirements.

Whatever the requirement, we have the experience, technology and know-how to meet customer's demands. As an independent company with an extensive network of reputable and dependable suppliers, we offer a responsive approach paired with the most appropriate components.



The ranges of our **Main Switchboards** are built to the highest industrial standards. They are used in power generation systems, distribution and transmission systems and are suitable for residential, industrial and commercial installations.

Our panels are manufactured with 2.0 mm thick steel and are finished utilizing a modern powder coat painting system to the clients colour requirement. All fitted electrical components are purchased from reputable suppliers and manufacturers.



FEEDER PILLARS

Single or double door units can be fitted with either steel or paxolene mounting trays to suit customer's requirements.

We are able to design and manufacture any other sizes that may be required by our customers.

EML trades in various electrical component and products ranging from domestic to specific industrial customer needs. We have a large, fully equipped retail store representing a large range of products from over 28 industry leading companies for which we are authorised distributors in Zambia.

With 50 years of success in electrical contracting, repairs, sales and manufacturing, we also offer specialist lighting solutions to suit every need.

- * Street Lighting
- * Area Lighting
- * Security Lighting
- * Domestic Lighting
- * Decorative Lighting
- * Industrial Lighting
- * LED Lighting Technology giving high lumen output
- * Specialist Architectural Lighting Solutions



EML Lighting offers a comprehensive range of cost effective, heavy duty, quality controlled, locally manufactured, indoor commercial CFL and LED fittings.

The fittings are designed and priced to suit the local Zambian market.

- * Offices
- * Storerooms
- * Workshops
- * Retails
- * Residential



World Bank Office - Pyramid Plaza



MTN Regional Office, Kitwe



STANBIC Bank, Chingola



New Soweto Market, Lusaka



SARO Agri



OpenScape Business offers small and medium-sized businesses the answer to their individual and diverse communication needs in a unified, flexible and scalable solution. The OpenScape Business solution architecture can be deployed independently of the existing telephony infrastructure, regardless of whether traditional telephony, IP or DECT is involved. From powerful telephony to a comprehensive UC solution, OpenScape Business always provides the right solution for all enterprises with up to 500 stations or 1000 stations in a network.

Flexible, scalable and powerful OpenScape Business combines the best of HiPath 3000 and OpenScape Office in a new solution platform.

OpenScape Business X3

- Flexible and scalable IP system
- Supports all necessary digital and analogue interfaces
- Ideal for 5 to 40 users utilizing either analogue or ISDN2 lines
- X3 supports any combination of IP, analogue, and digital telephones, as well as PC clients and cordless phones



OpenScape Business X5

- OpenScape X5 is a flexible rack or wall mounted system
- Offers solutions to suit many applications from basic to complex systems
- Real-Time IP system that also supports all necessary digital and analogue interfaces
- Interactive user prompting via display and dialogue keys on OpenStage handsets
- Quick and easy activation of features via handset
- Ideal for 12 to 80 users with ISDN2, ISDN30 or analogue lines
- Universal software concept offers a professional range of features normally only available on larger systems



OpenScape Business X8

- OSBiz X8 is the largest of the OpenScape Business family
- Supports up to 128 channels of ISDN lines, 60 channels of SIP as well as 500 IP handsets and up to 328 digital or analogue handsets
- For a variety of trunks depending on your business needs and allows deployment of the fully featured OpenScape UC platform
- Native IP connectivity allows users to share their applications and resources in a single location or throughout a multi-site network
- X8 delivers intelligence in communications

These are "All-in-One" Hardware platforms with:

- Onboard IP access and support for up to 500 subscribers
- IP, digital (UP0E), ISDN (BRI), analog (a/b), cordless (DECT) devices
- UC Smart application is fully embedded
- Connection to public WAN is done via SIP (LAN), ISDN (BRI und PRI) or analog trunks



Esteemed Clients

Christian Voice
Directory Publishers
German Embassy
Kabwe General Hospital
Kitwe General Hospital
ICC Ndola
Mission Press Ndola
MS - Zambia - Lusaka
Total (Z) Lusaka
Unicef Zambia
Zesco Kitwe
Zesco Kabwe
National Council for Science & Technology

RELIABLE AND MAINTENANCE FREE

The EML product offering covers advanced technologies suitable for use in urban and remote locations. The systems are designed to be economical, reliable and suited to end users such as homes, schools, clinics, villages, farms. They can be especially effective for telephone systems and radio relay stations.

THE BEST SOLUTIONS FOR A BETTER ENVIRONMENT IN ZAMBIA

Harnessing the sun's energy to power your equipment reduces fuel bills, noise or costly maintenance. Solar solutions are the most practical alternative for millions of people in rural regions.

POWER PROTECTION AND SECURITY

Be prepared for power cuts and surges. By installing uninterruptible (UPS) systems and associated surge protection. It will ensure independence from the power grid during outages and will protect costly electronic equipment damage during power system surges. The systems offered are user friendly and reliable.



SolarWorld
Solar Panel



Various
Solar Batteries



MorningStar
Charge Controller



Victron Inverter
Charger



Magnum Inverter
Charger



Kwik Inverter Charger

INSTALLATION

Our professional teams are constantly being updated with in-house training conducted by our senior engineers and principal suppliers.

Recent Projects and Solutions include:

100 Solar home systems in Nyimba
150 Solar home systems in Lundazi
Over 30 rural Health Centres



Solar Installation at Matero Level 1 Hospital



Solar Installation at Matero Level 1 Hospital



Rural Electrification Authority



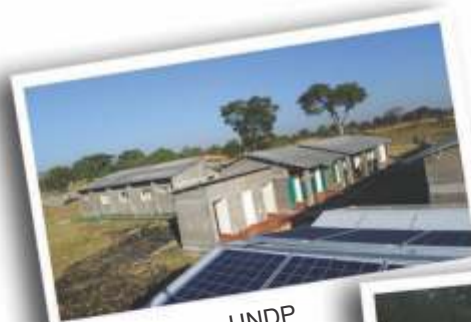
Rural Electrification Authority



Rural Electrification Authority



Rural Electrification Authority



UNDP



UNDP



UNDP

Siemens Healthcare develops innovations that support better patient outcomes with greater efficiencies, giving providers the confidence they need to meet the clinical, operational and financial challenges of a changing healthcare landscape. As a global leader in medical imaging, laboratory diagnostics, and healthcare information technology, we have a keen understanding of the entire patient care continuum - from prevention and early detection to diagnosis and treatment.

SOMATOM EMOTION

Widen your clinical capabilities with SOMATOM® Emotion. It is famous for its great versatility and high performance from exam set-up to image acquisition and processing - and will give you high efficiency in delivering high quality clinical outcomes. Innovative dose-saving features such as IRIS, CARE Dose4D and DoseMAP, combine the best possible image quality at the lowest possible dose. Simply fabulous.

COMPUTED TOMOGRAPHY



ACUSON X300

Ultrasound system has exceptional imaging performance in a compact, portable package. When you need to be mobile, or when space is limited, this fully featured system meets your most demanding operational and clinical challenges.



Luminos dRF

Luminos dRF Max is a 2-in-1 remote-control system that offers you the advantages of both digital fluoroscopy and radiography in one system. Giving you MAX - combining the proactive support of MAX assistance and the highly comprehensive imaging technology of MAX detection.

Safer, sharper, and stronger than ever before, Luminos dRF Max offers you a great investment.



Multix Select DR

Day after day, you will experience superior availability, image quality, and dose reduction over a wide range of exams. Beyond robust design, selected components from Siemens' high-end product range make an extra difference without extra costs).

So if you're planning on taking the digital leap now, don't settle for less. When it's your first time going digital, opt for the first choice.



MOBILETT MIRA

Mobilett Mira Max1 is your mobile imaging companion that lets you bring a broad range of extraordinary MAX advantages to the entire hospital - in a compact, powerful X-ray system that is always ready to go. Enjoy the comfort of MAX assistance for a successful working day and benefit from MAX detection to acquire excellent images wherever needed.



CR 30 - XM

Agfa Healthcare radiography (CR) system at ECR 2012. With this affordable, versatile and complete CF solution, lower-volume hospitals and private practices can benefit from the workflow advantages of digital radiography, for both mammography and general radiography.



Transforming Healthcare

We offer professional support in all aspects of installation, training and after sales service.

ESTEEMED CLIENTS

Corpmid Services
Kitwe Central Hospital
Kitwe Company Clinic
Lusaka Trust Hospital
Luanshya Mine Hospital
Malcom Watson Hospital - Mopani Copper Mines
Nchanga South Hospital - Konkola Copper Mines
Occupational Health Management Board
Roan Mine Hospital
St Paul's Mission Hospital
University Teaching Hospital
Wusakili Hospital - Mopani Copper Mines Plc
Zambia Italian Orthopaedic
Zambia Railways Clinic
Cancer Disease Hospital
CFB

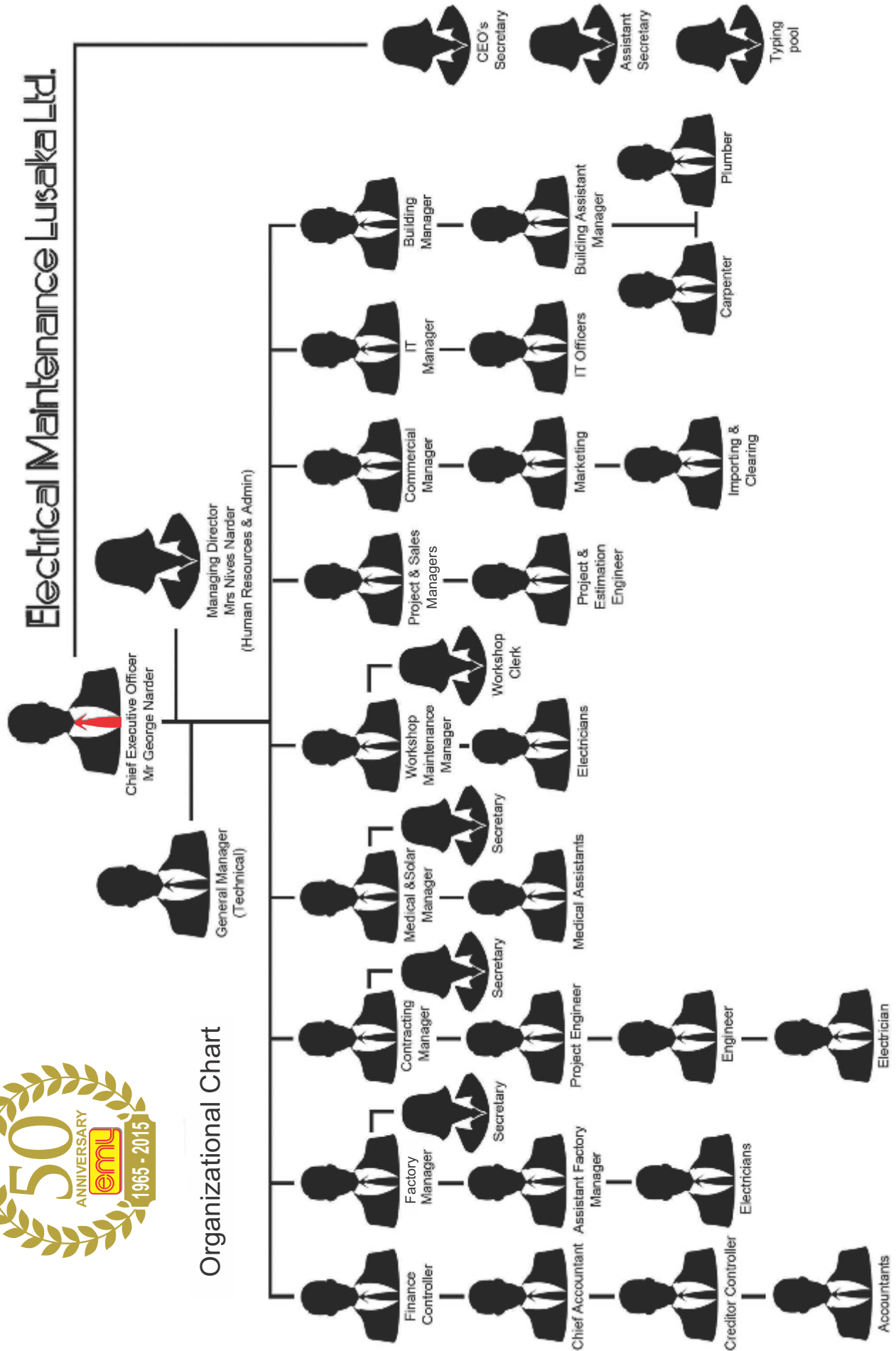
SIEMENS

FLUOROSCOPY

RADIOGRAPHY



Electrical Maintenance Lusaka Ltd.



EML AT A GLANCE

Electrical Maintenance Lusaka Ltd is a privately owned company with over 50 years' experience of doing business in Zambia. It is currently the most diversified electric and electronic engineering company in the country.

The company's main business continues to be manufacturing, construction, wholesale and includes solar, healthcare, control and instrumentation, motor repair and rewinding, light and panel manufacture and Power Factor Control solutions on both MV and LV.

EML has a strong focus on continuous improvement, offering innovative energy saving solutions (such as LED) and quality service to the client. The company's success is reflected in the growth of its client base, business expansion and stability in the market.

AUTHORIZED DISTRIBUTORS OF :



TEL:
+260 211 227824 - 7
+260 211 235366

Mobile:
+260 977 641010
+260 967 731975



TEL:
+260 212 228077
+260 212 228843

Mobile:
+260 974 228077
+260 955 228077

www.eml-eis.com



Plot 195, Luanshya Road, East End
Off Great North Road
P.O. Box 31189, Lusaka, 10101, Zambia



Plot 1023, Eshowe Road,
P.O. Box 22612, Kitwe, 10101, Zambia