



www.eml-eis.com



Electrical Maintenance Lusaka Ltd.

VALUE

SERVICE

QUALITY

LOYALTY

PRICE

SUPPORT



Contracting

Reliable Quality Service since 1968 in the field of Electrical Contracting Zambia.

2017-8

**COMPANY
PROFILE**

Name of the Company:

Electrical Maintenance Lusaka Ltd.

Address:

Head Office

Plot 195
Luanshya Road, East End
Off Great North End
Lusaka, 10101
Zambia

Contact Details:

+260 211 227824
+260 237014 - FAX

sales@eml-eis.com
support@eml-eis.com
buying@eml-eis.com

website:

www.eml-eis.com



Contracts Department

HISTORY: FOUNDER AND OWNER

Mr George Narder achieved electrical and mechanical engineering qualifications in Italy following which he worked in Switzerland for 6 years. In 1963 he arrived in Zambia as part of a testing and commissioning team for the newly built Kariba Power Station and has lived in Zambia ever since.

Mr Narder started an electrical engineering business in 1965, registered as Electrical Maintenance Lusaka LTD (EML). He has managed and run the company as its CEO for more than 50 years. Under his direct entrepreneurial management, EML has grown into one of the largest and most respected electrical and electronic engineering companies in Zambia.

The company benefits from more than 60 years of his passion, knowledge and expertise.

EML is proud to have participated in many facets of the social and economic development of the country



Mr George Narder, Comm

ELECTRICAL MAINTENANCE LUSAKA (EML) MOTO

*"Always with our customers"
To continue improving on our 50 years of
reliable quality service to the Zambian industry.*

OUR VISION

We strive to remain one of Zambia's leading and most diverse electrical contracting, manufacturing, retail and training companies.

We incorporate the best available local and international innovations and technologies in our services. Partnering with world leading brands, we supply our customers with the highest quality products and after sales service.

OUR MISSION

Our added value is to provide quality products, service and training for all electrical requirements across the country, even throughout Zambia.

We are renowned for highly skilled and experienced staff capable of managing complex projects in a timely manner. We strive to continue to innovate, provide support, while adapting to our clients' needs in a rapidly evolving environment.



LUSAKA - HEAD OFFICE

Plot 195, Luanshya Road, East End
Off Great North Road
P.O. Box 31189, Lusaka, 10101, Zambia

KITWE COPPER BELT

Plot 1023, Eshowe Road,
P.O. Box 22612, Kitwe, 10101, Zambia



An electrical installation and services business established by Mr. George Narder in 1964 and incorporated as **Electrical Maintenance Lusaka Limited (EML)** in 1965.

Mr. and Mrs. Narder, both Italian, are the Company's owner shareholders.

EML initially focused on electrical contracting services together with maintenance, however in 1968 this was expanded to include a production facility and in the 1970's a permanent presence on the Copper Belt was secured by the registration of Electrical Instrumentation Services limited (EIS) as a sister company to EML, where Mr. and Mrs. Narder are the company majority shareholders.

Both companies continue to operate successfully in both Lusaka and the Copper Belt. The company's main business today is electrical construction, manufacturing, wholesale supply of electrical products and materials, the supply and service of state of the art healthcare equipment, the supply and installation of solar products, telephone and switchboard systems, the supply and installation of power factor correction (PFC) equipment at both LV and MV voltages and all electrical customer service and training. Today the company has a

sizeable labour workforce of around 400 staff comprising professional engineers, technicians, artisans, trainees, cable jointers, linesmen, fitters, salesmen, students, etc. and includes the factory, retail store and administration staff.

EML has successfully undertaken various electrical construction projects ranging from power plants, substations, building and industrial electrical, overhead lines, solar through to power quality projects. In addition it also maintains an installed base of over 80 medical systems at 30 clinics and hospitals, and has completed and maintains rural solar installations throughout Zambia.

EML has been active in the Healthcare Sector (diagnostic imaging and related fields) in Zambia since the late 1980's with the world class solutions of

Siemens and Agfa.

In over 50 years of operation EML has employed and trained many hundreds of Zambian men and women through its ranks. Many have moved on, some have remained with the Company for over 30 years.

Returning customers have expressed their high regard for EML's commitment to quality, service and efficiency through their repeat business, referrals and recommendations to other potential clients.

...EML also maintains an installed base of over 80 medical systems at 30 clinics and hospitals...

EML has been active in the contracting environment in Zambia from its inception in 1965. The company engages in servicing, maintenance and major construction projects of varying magnitude and complexity. The company has seen steady growth and developed into one of the leaders of electrical construction in Zambia today.

The construction segment has a large contingent of qualified staff, plant and equipment, light, heavy and special vehicles required to successfully complete a full spectrum of electrical projects ranging from industrial, building services, substations, pump stations, overhead lines, fire systems, solar solutions, etc. EML has successfully completed over 250 large projects since 2005.

Electrical Contracting

EML has a vast portfolio of successfully completed projects including new commercial buildings, renovations, shopping malls, service stations, industrial installations, substations, overhead infrastructure, etc.

Current projects include:

Levy Business Park, Shopping Mall
Lilayi Lodge
Cancer Disease Hospital
Society House
Multichoice DSTV Head Office
Protea Lusaka Tower
BAT Housing Complex
TOYOTA Showroom and Workshop
EUREKA Park
Engen Filling Station, Longacres



Protea Lusaka Tower



Cancer Disease Hospital



Multichoice DSTV Head Office

Fire Detection

Consists of tri brand compatible photoelectric, ionization smoke detectors, heat detectors, call points and sounders which are fully compatible with Menvier, JSB and Cooper conventional panels. Single or multiple zones with high-level control of all devices on the system. Interfacing capabilities with other building systems which brings information into a single point to ensure maximum control. PC interface with monitoring of alarm and fault conditions.



NETWORK TYPE FM200 FIRE SUPPRESSION SYSTEM (HFC 227a)

MOTORIZED FIRE CURTAINS



CABINET TYPE FM200 GAS SUPPRESSION SYSTEM

Fm200 Gas Protection (Fire Suppression Systems)

Rapid discharge within 10 seconds, a flexible range of cylinder sizes and solenoid, mechanical or pneumatic activation. Fm200 systems are ideal where the risk is of high value loss and/or risk to the continuation and survivability of the business is present. Fm200 has zero effect on the earth's stratospheric ozone layer. We can also provide other means of fire suppression systems as per customer needs.

Public Address & Evacuation System

In an emergency situation communication is vitally important. The public address and evacuation systems provide the facility for pre-defined audible/visual warnings and announcements. The system can also be used for general information announcements.

Intercom/Emergency Communication Systems

Intercom Systems are designed to provide facilities with communication to the occupants of a plant building. Audio devices are located throughout the plant or building ensuring effective communication to all areas. Typical application for the emergency communication system would be fire telephones, disabled refuge alarms or nurse call systems that provides lift to talk or similar function to communicate with predefined designated location.

Access Control

Comprehensive networked or stand-alone access control systems designed and installed as per client specifications and requirements to provide effective means of controlling and recording access to designated areas with the appropriate levels of security as required.



CCTV Systems Stand Alone & Matrix

Total IP based digital video and audio recording system that provides continuous CCTV recording, archiving and debriefing capabilities that meets the needs of today's demanding security environment. The complete solution for high-level security. Alternatively, the stand-alone CCTV systems, which provides visual display of specific areas of plants or buildings. We are able to provide wired, wireless or optical connectivity for the devices as required needs. This includes full range of display and play back options without distance limitations.



Telephone, Data Network, Audio Video Installation

Innovative total solutions incorporating renown brands for communication, data and multimedia installations. Comprehensive range of cabling and network solutions are available for today's demands and tomorrow's possibilities.

Commissioning and Testing Services

Wide range of testing services are available including but not limited to power quality tests, thermal imaging tests, ground resistance tests. Where an independent opinion is required, our qualified registered engineers can test and commission installations by providing professional independent advice for additional cost effective improvements.

Installation Capabilities

EML performs maximum in-house installation work, with the majority of installations performed by our in house technicians who are experienced in the field of Fire Life and Safety Systems. EML allocates all projects undertaken to a specific project manager who is responsible for the project from concept to handover.

Conclusion


We are a company with the resources to achieve the services offered in this company profile. We custom build systems to clients specifications or requirements whether in Retail, Industrial, and Financial Sectors, etc. EML assures timely response to customer service, user-friendly equipment, top class technical support and service plan.

Electrical Contracting



Entire electrical installation at 50mw HFO power plant including 33kv / 11kv / LV and controls done by EIS.



	NDOLA ENERGY PHASE 2
MAIN CONTRACTOR	WARTSILA
CLIENT	NDOLA ENERGY COMPANY LIMITED



2015

Shoprite - Mongu
 Bokomo - Chingola
 Shoprite Chingola
 Chingola Shopping Mall
 Zambia Breweries Yeast and Ipp
 Indo Zambia Bank
 Total Retail Sites Earth Bonding
 Total Gt Sites Earth Bonding
 Stanbic Bank Ndola
 Zambia Sugar - Electrification
 Reticulation
 Manda Hill Centre
 K. P. T. F.
 Total Maintenance
 Rishaba Investments Limited
 Lilayi Properties Limited
 Shoprite Ndola
 Engen Buseko
 Engen Chelston
 Kobil
 Mr. Dudhia
 Engen Chawama
 Stanbic Pamodzi
 Lusaka Stock Exchange
 Bank of Zambia - 7th Floor
 Malting Plant - Zambian Breweries
 Protea Ndola
 Barley Malting Plant
 Hitachi Construction Phase 2
 Garden City Shopping Mall
 E.F.C. - Pulse Financial Services
 Mainstreet Office Block
 Wimpy & Corner Bakery - Engen Kitwe
 Penmarks Showroom

Total Depot - Lusaka
 Shoprite Chililabombwe
 Circle Transtra International
 Bank of Zambia - 7th Floor
 Rekays Shopping Centre
 Toyota Zambia - Nangwenye
 Toyota Zambia - Copperbelt
 Akay Plastics Factory
 Investrust Bank Plc. Freedomway
 Nampak Ndola
 National Breweries
 Total Solwezi A
 T.Z.A.M.
 New District Hospital Matero
 Pick n Pay Unza
 Mr Yazaumeid's Residence
 Catholic Diocese Phase 2 Ndola
 Shoprite Kapiri Mposhi
 Baobab College
 Arcades Development
 Total Solwezi Airport
 Church of Jesus Christ L.D.S.
 Action Auto Lusaka
 Engen Kitwe - Depot
 Bank of Zambia - Annex
 Pick n Pay Society House
 Food Lovers - Umza
 Puma Energy Zambia Plc
 Boxmore Plastic Warehouse
 Mri Seed Syngenta Small Farm
 Stanbic Bank Cairo Rd.
 Makoli Apartments
 Bridge Shipping Office & Warehouse
 Office Block for Mr. Laurence Matibini

Zanaco Data Centre Main Panel
 Office Block for Saturnia Pension Trust
 Fund
 Saro Agri - Workshop and Warehouse
 African Milling Company
 International Bus Terminus in Livingstone
 Plastic Factory - Lighting
 Plastic Factory - Machines
 Barloworld Equipment Zambia Limited
 Freedom Park Shopping Mall - Kitwe
 Bokomo Farm
 Kalumbila Mine
 International Commercial Bank

2012

Total Maintenance
 Investrust Bank - Levy Park Branch
 A.M. Motors
 Eureka Business Park - Farmers House
 Zanaco Head Office - Archives
 Toyota Zambia - Lusaka
 Standard Chartered Bank - Ndola
 Verino Agro - Industries Ltd
 Kcm Offices - Abacus
 African Oil Mall
 Zambia Centre for Accountancy Studies
 Vijayvargiya House
 Nampak Md's Residence
 British Council Head Office
 Citi Bank
 Jica Zambia Office
 Engen Longacres Service Station
 Society House
 Lilayi Lodge
 Barclays Bank - Kafue House
 New Stanbic Bank Branch - Ndola
 Cancer Disease Hospital Phase II
 Stanbic Bank Branch - Chambishi
 Standard Chart. Bank Branch - Levy Park
 Nampak Zambia Ltd
 Dulux Zambia Ltd
 Tak Pamodzi Hotel - Lusaka
 Zanaco Head Office - 2nd Floor
 Zamanita
 Net One Data Centre - Roma
 Stan Chart. Bank - Arcades, Chilenje &
 Makeni
 Society House - Electrical Works Ht
 Chipata Shoprite Checkers
 Hungry Lion - Ndola
 Society for Family Health
 Shoprite Luanshya

2014

New Boutique Hotel
 Yukon Estate Housing Makeni
 Total Solwezi 'A'
 Housing Unit at Roma Park
 South View External Works
 Euxton Agriculture Limited
 Zambia Sugar Plc - Phase 1
 Engen Petroleum - Luanshya
 Total Maintenance
 Total Kalumbila (Fqm) Service Station
 Engen Mufulira Service Station
 Chingola Hub Project
 Renovation of House on Plot 15C
 Middle Way
 Limeco Ltd Zambia

2013

Unified Chemicals Limited
 Total Kansanshi Fuel Depot
 Ndola Catholic Diocese - Ndola
 Investrust Bank - Buteko, Ndola
 Investrust Bank Z - Mart, Ndola
 Total Maintenance
 Protea Hotel
 Lumwana Mine
 Kings Chemicals Ltd
 Stanbic Bank Industrial Branch
 Shoprite Kitwe
 Wood Processing Industries
 Kenyan High Commission
 South Gate Investment
 Mamco Office Block

2011

Engen petroleum - New Industrial F/Station
Zambia National Service - Chamba Valley
Dwelling House
Multichoice Head Office
Total Maintenance
Saro Agri - Md's Residence
L.M. Engineering Ltd
BP Zambia Limited - Ndola Airport
Lusaka Water and Sewerage Co. Ltd
Chongwe District Council
Miracle Life Family Church - Genset
Zanaco Old Head Office Building
Bank of Zambia
Total Zambia - Warehouse
Barloworld - Kitwe
Hitach Construction Ltd
Shakespeare Court Com
Stanbic Bank (Z) Limited - Kabwe
Prinx Park
Kings Chemicals Ltd - Great North Road

African Food Products
Zanaco (New) - Unza Branch
Intermarket - Cairo Road
Indo - Zambia Bank - Chandwe
Musonda Road
Nampak Zambia Ltd - Ndola
Livingstone Shoprite Checkers
Barclays Bank - Kitwe
Total Solwezi
Hungry Lion - Livingstone
Mugg and Bean
Madson and General Insurance

2010

Zanaco Head Office
Livingstone Shoprite
Coppernet Solutions - Kitwe
Total Maintenance
Cancer Disease Hospital - Lusaka
Toyota Zambia - Kitwe
Lilayi Housing - J.J. Lowe
Dariyaye Milling Ltd - Maize Mill
Krimanvi Properties
Nestle (Z) Trading Ltd
Investrust Bank - Chirundu Branch
African Banking Corporation - Kitwe
Royal Netherlands Embassy

Shoprite Checkers - Hungry Lion - Manda Hill
Cavmont Capital Bank - Kitwe
African Banking Corporation - Ndola
Eureka Retail Park - Kafue Road
Standard Chartered Bank - Main Branch
Levy Business Park
Shoprite Checkers - Mazabuka
Standard Chartered Bank - Buteko - Ndola
Electrical Techniques Ltd
Kabulonga Bakery - Lusaka
National Highway Engen Filling Station

2009

Saturnia Regina Trust
Shoprite Checkers
Ambro Limited
Zambia National Commercial Bank
Stanbic Bank (Zambia) Ltd.
Bay Port Financial Services Limited
Pestalozzi, Lusaka
Ministry of Education
Nampak (Zambia) Limited
MTN (Zambia) Limited
National Olympic Committee
Grain Storage Solutions Limited
Zambia Bureau of Standards
Miracle of Life Ministries
Zambia State Insurance Corporation
Intermarket Banking Corporation
German Embassy, Lusaka
Taj Pamodzi Hotel Plc
Progressive Poultry Limited, Lusaka
Total Petroleum (Zambia) Limited
United Bank of Africa Limited
Africa Milling Company
CK Outdoor Advertising (Zambia) Ltd
University of Zambia

2008

Engen (Z) Ltd
Pesttalozzi Zambia Limited
Saturnia Regina Pension Trust Fund
Shoprite Checkers
National Institute of Public Admin.
Eastland Developers
Barclays Bank Plc
Atlascopco (Zambia) Limited
Bayport Financial Services
Stanbic Bank (Z) Ltd
North Atlantic Engineering Consultants
Nampak (Zambia)

2007

South Gate Ltd
Shoprite Checkers
Total Petroleum (Zambia) Ltd
Spar (Zambia) Ltd
Total (Zambia) Ltd
M. A. Milling Company
Barclays Bank Plc
Engen (Z) Ltd
Lenco Grain Silos
Intercontinental Hotel

2006

Velos
Mukango Construction
Spar Soweto
Norwegian Embassy
Stanbic Bank (Z) Ltd
Saro Agri Equipment
Shoprite Checkers - Lusaka
Millers Construction
Royal Netherlands Embassy
Finance Bank (Z) Ltd
Barclays Bank (Z) Plc
American Embassy
Millers Construction
Total (Z) Ltd
African Milling Co. Ltd
Bank of Zambia
Germany Technical Cooperation
Spar (Zambia) Ltd

2005

Norwegian Embassy
Yangts Jiang Enterprises
Stanbic (Z) Ltd
Johnken States - Chisamba
Total (Z) Ltd
Dunavant Oil (Z) Ltd
China Jiangxi Enterprises
American Embassy
Barclays Bank (Z) Ltd
Standard Chartered Bank

We have our own transport facilities to cater any type of electrical contracts



LEVY BUSINESS PARK, SHOPPING MALL



KABULONGA SHOPPING CENTRE



GARDEN CITY



SOCIETY HOUSE



TAJ PAMODZI HOTEL



METROPOLITAN HOUSE



MADISON WAREHOUSES



CANCER DISEASES HOSPITAL



MATERO LEVEL 1 HOSPITAL

CHILENJE LEVEL 1 HOSPITAL



CARGILL SOYA OIL PLANT



STANBIC BANK MANDA HILLS



PUMA FILLING STATION



CARE FOR BUSINESS HOSPITAL, LUSAKA



CANCER DISEASES HOSPITAL, LUSAKA



SECONDARY SCHOOL - LUMEZI



LUSAKA CIRCLE OFFICE



MTN REGIONAL OFFICE, KITWE



ATLASCOPCO, HEAD OFFICE, CHINGOLA



PRIVATE RESIDENCE, LUSAKA



S.M.A. MULTIPURPOSE CENTRE
& CATHOLIC CHURCH, CHAINDA



TANK HOUSE - MOPANI MINES



MILLING FACTORIES



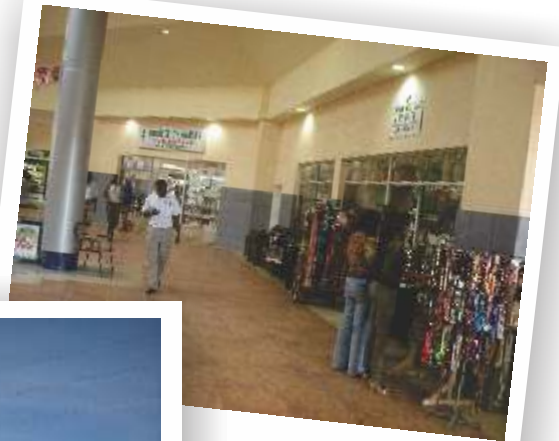
GRAIN SILOS “LENCO” - LUSAKA



SARO AGRI



CROSS ROAD SHOPPING MALL - LEOPARDS HILL



ZAMBIA STATE INSURANCE CORPORATION

HEAD OFFICE BUILDING, LUSAKA

NATIONAL INSTITUTE OF PUBLIC ADMINISTRATION



CLASS ROOM BLOCKS, LUSAKA



LUSAKA INTERNATIONAL AIRPORT

WALKWAYS TO ARRIVAL AND DEPARTURE TERMINALS

INSTALLATION

Our professional team are trained and equipped to install customised systems for all applications.

TELEPHONE SYSTEM

Esteemed Clients

Christian Voice
Directory Publishers
German Embassy
Kabwe General Hospital
Kitwe General Hospital
ICC Ndola
Mission Press Ndola
MS - Zambia - Lusaka
Total (Z) Lusaka
Unicef Zambia
Zesco Kitwe
Zesco Kabwe

National Council for Science & Technology



FIRE DETECTION SYSTEMS



SOLAR PROJECTS

Recent Projects and Solutions include:

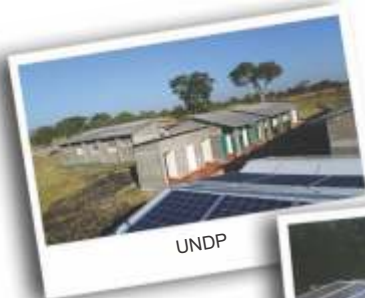
100 Solar home systems in Nyimba
150 Solar home systems in Lundazi
Over 30 rural Health Centres



Solar Installation at Matero Level 1 Hospital



Rural Electrification Authority



UNDP



UNDP



Rural Electrification Authority



Rural Electrification Authority



UNDP



Rural Electrification Authority

EML trades in various electrical component and products ranging from domestic to specific industrial customer needs. We have a large, fully equipped retail store representing a large range of products from over 28 industry leading companies for which we are authorised distributors in Zambia.

With 50 years of success in electrical contracting, repairs, sales and manufacturing, we also offer specialist lighting solutions to suit every need.

- * Street Lighting
- * Area Lighting
- * Security Lighting
- * Domestic Lighting
- * Decorative Lighting
- * Industrial Lighting
- * LED Lighting Technology giving high lumen output
- * Specialist Architectural Lighting Solutions



EML Lighting offers a comprehensive range of cost effective, heavy duty, quality controlled, locally manufactured, indoor commercial CFL and LED fittings.

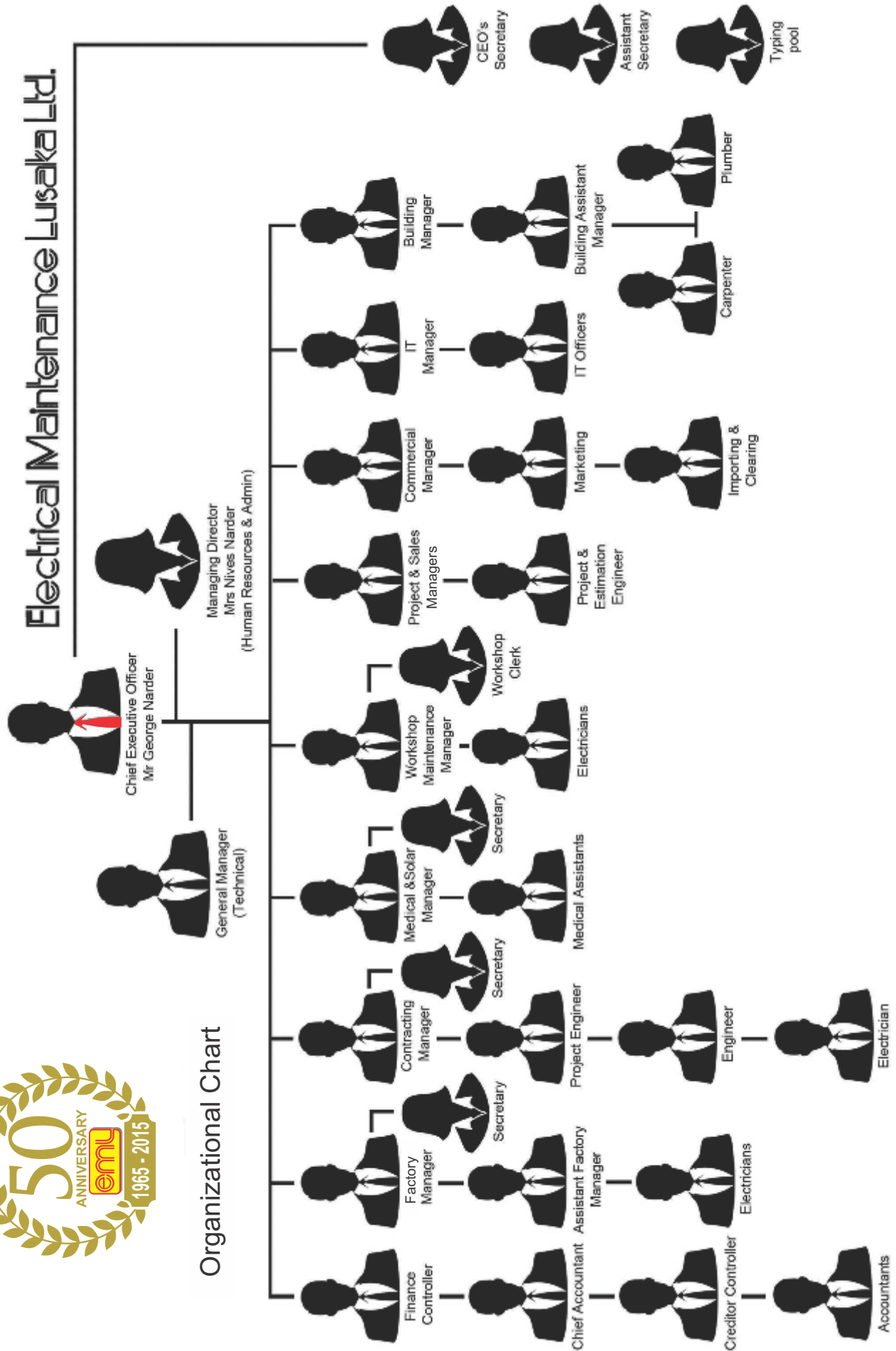
The fittings are designed and priced to suit the local Zambian market.

- * Offices
- * Storerooms
- * Workshops
- * Retails
- * Residential





Electrical Maintenance Lusaka Ltd.



Organizational Chart

EML AT A GLANCE

Electrical Maintenance Lusaka Ltd is a privately owned company with over 50 years' experience of doing business in Zambia. It is currently the most diversified electric and electronic engineering company in the country.

The company's main business continues to be manufacturing, construction, wholesale and includes solar, healthcare, control and instrumentation, motor repair and rewinding, light and panel manufacture and Power Factor Control solutions on both MV and LV.

EML has a strong focus on continuous improvement, offering innovative energy saving solutions (such as LED) and quality service to the client. The company's success is reflected in the growth of its client base, business expansion and stability in the market.

AUTHORIZED DISTRIBUTORS OF :



TEL:
+260 211 227824 - 7
+260 211 235366

Mobile:
+260 977 641010
+260 967 731975



TEL:
+260 212 228077
+260 212 228843

Mobile:
+260 974 228077
+260 955 228077

www.eml-eis.com



Plot 195, Luanshya Road, East End
Off Great North Road
P.O. Box 31189, Lusaka, 10101, Zambia



Plot 1023, Eshowe Road,
P.O. Box 22612, Kitwe, 10101, Zambia