



[www.eml-eis.com](http://www.eml-eis.com)



# Electrical Maintenance Lusaka Ltd.

**VALUE**

**SERVICE**

**QUALITY**

**LOYALTY**

**PRICE**

**SUPPORT**



## Healthcare

We provide the very latest in Healthcare Technology

Reliable, durable and excellent value

With full aftersales service, training and support

**2017-8**

**COMPANY  
PROFILE**



**Name of the Company:** Electrical Maintenance Lusaka Ltd.

**Address:** **Head Office**  
Plot 195  
Luanshya Road, East End  
Off Great North End  
Lusaka, 10101  
Zambia

**Contact Details:** +260 211 227824  
+260 237014 - FAX  
  
hightec@eml-eis.com  
sales@eml-eis.com  
support@eml-eis.com  
buying@eml-eis.com

**website:** [www.eml-eis.com](http://www.eml-eis.com)



Medical and IT Department

## HISTORY: FOUNDER AND OWNER

Mr George Narder achieved electrical and mechanical engineering qualifications in Italy following which he worked in Switzerland for 6 years. In 1963 he arrived in Zambia as part of a testing and commissioning team for the newly built Kariba Power Station and has lived in Zambia ever since.

Mr Narder started an electrical engineering business in 1965, registered as Electrical Maintenance Lusaka LTD (EML). He has managed and run the company as its CEO for more than 50 years. Under his direct entrepreneurial management, EML has grown into one of the largest and most respected electrical and electronic engineering companies in Zambia.

The company benefits from more than 60 years of his passion, knowledge and expertise.

EML is proud to have participated in many facets of the social and economic development of the country



Mr George Narder, Comm

### ELECTRICAL MAINTENANCE LUSAKA (EML) MOTO

*"Always with our customers"  
To continue improving on our 50 years of  
reliable quality service to the Zambian industry.*

## OUR VISION

**W**e strive to remain one of Zambia's leading and most diverse electrical contracting, manufacturing, retail and training companies.

We incorporate the best available local and international innovations and technologies in our services. Partnering with world leading brands, we supply our customers with the highest quality products and after sales service.

## OUR MISSION

**O**ur added value is to provide quality products, service and training for all electrical requirements across the country, even throughout Zambia.

We are renowned for highly skilled and experienced staff capable of managing complex projects in a timely manner. We strive to continue to innovate, provide support, while adapting to our clients' needs in a rapidly evolving environment.



## LUSAKA - HEAD OFFICE

Plot 195, Luanshya Road, East End  
Off Great North Road  
P.O. Box 31189, Lusaka, 10101, Zambia

## KITWE COPPER BELT

Plot 1023, Eshowe Road,  
P.O. Box 22612, Kitwe, 10101, Zambia



An electrical installation and services business established by Mr. George Narder in 1964 and incorporated as **Electrical Maintenance Lusaka Limited (EML)** in 1965.

Mr. and Mrs. Narder, both Italian, are the Company's owner shareholders.

EML initially focused on electrical contracting services together with maintenance, however in 1968 this was expanded to include a production facility and in the 1970's a permanent presence on the Copper Belt was secured by the registration of Electrical Instrumentation Services limited (EIS) as a sister company to EML, where Mr. and Mrs. Narder are the company majority shareholders.

Both companies continue to operate successfully in both Lusaka and the Copper Belt. The company's main business today is electrical construction, manufacturing, wholesale supply of electrical products and materials, the supply and service of state of the art healthcare equipment, the supply and installation of solar products, telephone and switchboard systems, the supply and installation of power factor correction (PFC) equipment at both LV and MV voltages and all electrical customer service and training. Today the company has a

sizeable labour workforce of around 400 staff comprising professional engineers, technicians, artisans, trainees, cable jointers, linesmen, fitters, salesmen, students, etc. and includes the factory, retail store and administration staff.

EML has successfully undertaken various electrical construction projects ranging from power plants, substations, building and industrial electrical, overhead lines, solar through to power quality projects. In addition it also maintains an installed base of over 80 medical systems at 30 clinics and hospitals, and has completed and maintains rural solar installations throughout Zambia.

EML has been active in the Healthcare Sector (diagnostic imaging and related fields) in Zambia since the late 1980's with the world class solutions of

Siemens and Agfa.

In over 50 years of operation EML has employed and trained many hundreds of Zambian men and women through its ranks. Many have moved on, some have remained with the Company for over 30 years.

Returning customers have expressed their high regard for EML's commitment to quality, service and efficiency through their repeat business, referrals and recommendations to other potential clients.

*“...EML also maintains an installed base of over 80 medical systems at 30 clinics and hospitals...”*



Siemens Healthcare develops innovations that support better patient outcomes with greater efficiencies, giving providers the confidence they need to meet the clinical, operational and financial challenges of a changing healthcare landscape. As a global leader in medical imaging, laboratory diagnostics, and healthcare information technology, we have a keen understanding of the entire patient care continuum - from prevention and early detection to diagnosis and treatment.

## COMPUTED TOMOGRAPHY



## SOMATOM EMOTION

Widen your clinical capabilities with SOMATOM® Emotion. It is famous for its great versatility and high performance from exam set-up to image acquisition and processing - and will give you high efficiency in delivering high quality clinical outcomes. Innovative dose-saving features such as IRIS, CARE Dose4D and DoseMAP, combine the best possible image quality at the lowest possible dose. Simply fabulous.

## MOBILETT MIRA

Mobilett Mira Max1 is your mobile imaging companion that lets you bring a broad range of extraordinary MAX advantages to the entire hospital - in a compact, powerful X-ray system that is always ready to go. Enjoy the comfort of MAX assistance for a successful working day and benefit from MAX detection to acquire excellent images wherever needed.



**RADIOGRAPHY**

## CR 30 - XM

Agfa Healthcare radiography (CR) system at ECR 2012. With this affordable, versatile and complete CR solution, lower-volume hospitals and private practices can benefit from the workflow advantages of digital radiography, for both mammography and general radiography.

**AGFA** 



## Luminos dRF

Luminos dRF Max is a 2-in-1 remote-control system that offers you the advantages of both digital fluoroscopy and radiography in one system. Giving you MAX - combining the proactive support of MAX assistance and the highly comprehensive imaging technology of MAX detection.

Safer, sharper, and stronger than ever before, Luminos dRF Max offers you a great investment.



**FLUOROSCOPY**

## Multix Select DR

Day after day, you will experience superior availability, image quality, and dose reduction over a wide range of exams. Beyond robust design, selected components from Siemens' high-end product range make an extra difference without extra costs).

So if you're planning on taking the digital leap now, don't settle for less. When it's your first time going digital, opt for the first choice.



## ACUSON X300

Ultrasound system has exceptional imaging performance in a compact, portable package. When you need to be mobile, or when space is limited, this fully featured system meets your most demanding operational and clinical challenges.



**ULTRASOUND**

**SIEMENS**

## INSTALLATIONS

Wusakili Hospital -	Mopani Copper Mines Plc Mobilett 2 mobile x-ray unit Konica SRX 201 - Film Processor Sonoline Adara ultrasound scanner Sireskop Cx Fluoroscope Unit with Digital Imaging system Sonoline G50 ultrasound Scanner
Nchanga South Hospital (Konkola Copper Mines Plc)	Mobilett 2 mobile x-ray unit Sonoline SI 450 Ultrasound Scanner
Malcom Watson Hospital (Mopani Copper Mines Plc)	Mobilett 2 mobile x-ray unit Sonoline G50 ultrasound Scanner Machine
Cancer Diseases Hospital	Primus M Linear Accelerator Simulix MCR Simulator Mammomat 3000 Nova Siremobile Compact L. Theratron 780E Cobalt Unit Microselectron HDR Brachytherapy unit Theraplan Plus Planning System Dosimetry Equipment Konica SRX 201 Film - Processor Mammoray Film Processor
Namwala District Hospital	x2 Multimobil 10 Mobile X-ray unit

## Transforming Healthcare

We offer professional support in all aspects of installation, training and after sales service.

## ESTEEMED CLIENTS

Corpmmed Services  
Kitwe Central Hospital  
Kitwe Company Clinic  
Lusaka Trust Hospital  
Luanshya Mine Hospital  
Malcom Watson Hospital - Mopani Copper Mines  
Nchanga South Hospital - Konkola Copper Mines  
Occupational Health Management Board  
Roan Mine Hospital  
St Paul's Mission Hospital  
University Teaching Hospital  
Wusakili Hospital - Mopani Copper Mines Plc  
Zambia Italian Orthopaedic  
Zambia Railways Clinic  
Cancer Disease Hospital  
CFB

## INSTALLATIONS

CLIENT	DESCRIPTION
Lusaka Trust Hospital	Burdick Eclipse 820i ECG Machine Sonoline Prima Ultrasound Scanner Sirona M1 Dental Chair Multix Compact X-ray Unit Konica SRX201 Film Processor 4 ECG Monitors 1 Resuscitaire
Evelyn Hone College	Sonoline SI1 Ultrasound Scanner
Chainama Hills College Hospital	Sonoline SI1 Ultrasound Scanner
Zambia Railway Clinic	Vertex B - Polyphos 15c X-ray machine
Kitwe Central Hospital	Sonoline SI1 Ultrasound Scanner Burdick Eclipse 820i Sorina Spirit AC dental chair Konica SRX 301 film Processor
Luanshya Mine Hospital	Mobilett Plus Mobile x-ray unit Sonoline G50 ultrasound scanner Konica SRX 301 film Processor
Roan Mine Hospital	Multix UP - Polydoros LX 30 x-ray machine Polymobil 3 mobile x-ray unit
Corpmed Services	Vertex UP, Polydoros LX 30 Lite x-ray machine AGFA Curix 60 Film Processor
Sinozam Friendship Hospital	Sorina E4 dental chair
Nchanga North Hospital	Mobilett 2 mobile x-ray unit
Zambezi District Hospital	Polymobil 10 mobile x-ray unit
Sichili Mission Hospital	Polymobil 2 mobile x-ray
Chama District Hospital	Polymobil 3 mobile x-ray unit
St Paul's Mission Hospital	Multix Compact Polydoros Lx30 Lite x-ray machine
University Teaching Hospital	2 Konica SRX 301 Film Processors
Kitwe Company Clinic	Sonoline Adara Ultrasound Scanners
Zambian Italian Orthopaedic Hosp.	Siremobil Compact Image Intensifier
Occupation Health Management Board	Odelca Camera Polymobil 10 mobile x-ray unit Konica SRX 501 - Film Processor Multix UP - Polydoros LX 30 Lite x-ray machine PolyMobil Plus Odelca

**THE LATEST IN HEALTHCARE TECHNOLOGY**

**RELIABLE, DURABLE AND EXCELLENT VALUE  
WITH FULL AFTERSALES SERVICE AND TRAINING SUPPORT**

The following are selected examples of Siemens equipment installed and commissioned by EML

This medical equipment was supplied based on customers specifications.  
We ensure it fulfills their requirements and standards successfully.

Each new unit covered by a warrant and our clients receive this thorough training, technical support and after sales services.

**OCCUPATIONAL HEALTH MANAGEMENT BOARD, KITWE**

Siemens Multix UP with Odelca Camera



Odelca DR Digital Camera



## CANCER DISEASES HOSPITAL LUSAKA



Siemens Linear Accelerator



Cobalt Machine



Control Room



X-Ray Machine dRF Max

X-Ray Machine dRF Max  
Console

Mobilett Mira

## CANCER DISEASES HOSPITAL LUSAKA



CT Scanner "Somatom Scope"



Images from the CT Scanner



The CT Scanner workstation



Contrast Injector for the CT Scanner



Nurses Call Station



Nurses Call Station

### LUSAKA TRUST HOSPITAL, LUSAKA



Sonoline Prima Ultrasound Scanner



Multix Compact X-ray Machine

### WUSAKILI HOSPITAL



Sireskop CX

### WUSAKILI HOSPITAL (MOPANI COPPER MINES PLC)



Fluorospot Compact

### CORPMED SERVICES, LUSAKA



Vertex UP, Polydoros Lx30 X-ray Machine

### ITALIAN HOSPITAL, LUSAKA



Siresmobil Compact Image Intensifier



**WUSAKILI HOSPITAL (MOPANI COPPER MINES PLC)**



Sonoline Adara Ultrasound Scanner



Mobilett 2 Mobile X-ray Unit

**NCHANGA SOUTH HOSPITAL  
(KONKOLA COPPER MINES PLC)**



Monilett Plus Mobile X-ray Unit

**LUANSHYA MINE HOSPITAL, LUANSHYA**



Monilett Plus Mobile X-ray Unit

**NCHANGA SOUTH HOSPITAL  
(KONKOLA COPPER MINES PLC)**



Sinoline SI1 ultrasound Scanner

**ZAMBIA RAILWAYS CLINIC, KABWE**



Vertex B - Polyphos 15C X-ray Machine



## SOMATOM EMOTION

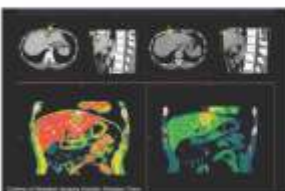
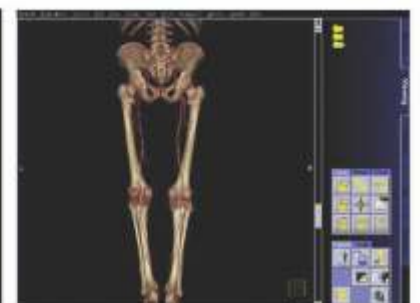
'Siemens' customer-focused philosophy has always been to continually integrate cutting-edge imaging applications into daily clinical routine, providing high quality patient care while simultaneously lowering costs. And the success of this philosophy is easily recognizable: More than 5,000 satisfied and knowledgeable customers have purchased the SOMATOM® Emotion, making it the world's most popular CT scanner. This should be no surprise to medical professionals. After all, Siemens has been a leader in CT innovation since 1974.

*“...expect, and will receive, high-end imaging performance...”*

Siemens are now continuing this unparalleled success story in an increasingly competitive and rapidly changing healthcare market.

While patients continue to expect higher diagnostic accuracy, healthcare institutions and Physicians are being forced to reduce time to diagnosis and unnecessary hospitalisation. To meet these and tomorrow's demands for higher quality and cost-efficient healthcare, Siemens have developed the new SOMATOM Emotion. With both 6-slice and 16-slice configurations outfitted with Siemens' newest technological advances, CT scanning has never before been so efficient and pleasurable. You can expect, and will receive, high-end imaging performance from an unbelievably compact scanner that can continuously protect your investment.

If you are a radiologist, technologist, or financial administrator, you will enjoy knowing that you own the world's most popular CT scanner.







The efficiency of imaging workflows is key, especially in ICUs and emergency wards, in order to enable fast treatment decisions and make work easier.

Mobilett Mira Max1 is a fully digital mobile X-ray machine that helps to speed up the examination workflow. It makes mobile X-ray imaging effortless and fast, and with its powerful generator and MAX detectors provides outstanding image quality in seconds.

Achieve mobile X-ray process efficiency with a digital companion that offers fast and reliable imaging results.

Flexible to meet your challenges -  
exceptional arm range and precise movements

- ✱ MAX image quality in every situation - low-weight MAX detectors and high imaging power
- ✱ Always ready to assist you - unique charging concept and multiple detector swapping options
- ✱ MAX - Multiple Advances in X-ray



More and more radiology practices and departments are now moving away from conventional analog radiography using x-ray films/screens to adopt new digital technologies.

This move is motivated by the following factors:

- \* High cost of chemicals
- \* High cost of maintaining a film processor
- \* Need of a separate dark room
- \* Environmental impact of chemicals
- \* Limited space for archiving films

EML is now helping radiology departments to make the digital move by offering these two technologies

**AGFA** *Agfa*  
HealthCare



### CR - COMPUTED RADIOLOGY

Should your practice face budget constraints and you would like to use the existing x-ray machine, we offer CR solutions by Agfa for general radiography and mammography. With Agfa digitisers, radiology departments will take advantage of the following benefits:

- \* More consistent image quality
- \* More affordable solutions to go digital using the existing infrastructure
- \* Less dependency on exposure factors or dark room machinery
- \* Distribution of images to other remote locations (including digital archiving)
- \* Post processing of images to suit individual tastes



### DR - DIRECT RADIOLOGY

New digital systems using flat detectors (solid slate detector) are now being used to replace conventional film-screen systems for radiography, fluoroscopy and angiography. We offer a complete range of solutions by Siemens Healthcare.

DR Technologies offer faster speed, improved workflow and increased productivity to imaging departments.





Multix Select DR lets you discover its advantages - filmless, fast, and flexible - at a price you might not have expected. Day after day, you will experience superior availability, image quality, and dose reduction over a wide range of exams.

Beyond robust design, selected components from Siemens' high-end product range make an extra-difference (without extra costs). So if you're planning on taking the digital leap now, don't put up with less.

For the first time, you will have a day without the hassle of film and cramped archives. For the first time, it will take just 9 seconds to view an image. And for the first time, you have access to an economical high-quality digital system.

Yes, Multix Select DR is the first choice for every day with its intuitive user interface and advanced image processing. It's the first choice for your patients and a wide spectrum of examinations. And using selected technologies from Siemens' top-of the-line X-ray products; it simply reflects first choice in every way.





### Analog Mammography System from Siemens

The Mammomat 3000 Nova combines screening and diagnostic for maximum utilisation in one single unit. The ability to integrate with a variety of CR readers makes it easy to upgrade to digital.

In Zambia cancer in general is claiming more and more lives and breast cancer is now considered to be one of the major life threatening diseases. There is however a reason to hope for a better future: if breast cancer is diagnosed at an early stage, there is a good chance of curing the disease. Cancer Diseases Hospital has been over the last 10 years conducting breast cancer screening using the state of art Siemens Mammomat 3000 Nova. In 2016 alone a total number of 670 patients were successfully screened at the institution and this is helping prevent the development of the life-threatening disease.

### The future of mammography from analog to digital...

## MAMMOMAT INSPIRATION



Mammography screening entails examining thousands of healthy women. So keeping dose as low as possible is extremely important. At the same time high image quality is the key to detecting the smallest detail. Mammomat Inspiration with PRIME Technology results in up to 30% less dose and uncompromised image quality. Become the institution of choice by providing standard-setting low dose mammography system for your patients.

### MAMMOMAT INSPIRATION WITH PRIME TECHNOLOGY

Great comfort, relaxed patients  
Reassure women with features for a  
relaxing exam







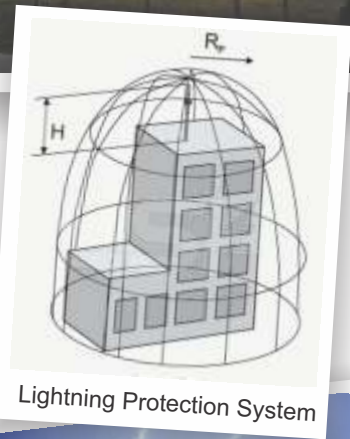
Nurses Call Station



Solar Installation at Matero Level 1 Hospital



Solar Installation at Matero Level 1 Hospital



Lightning Protection System



LED Lighting in hospitals



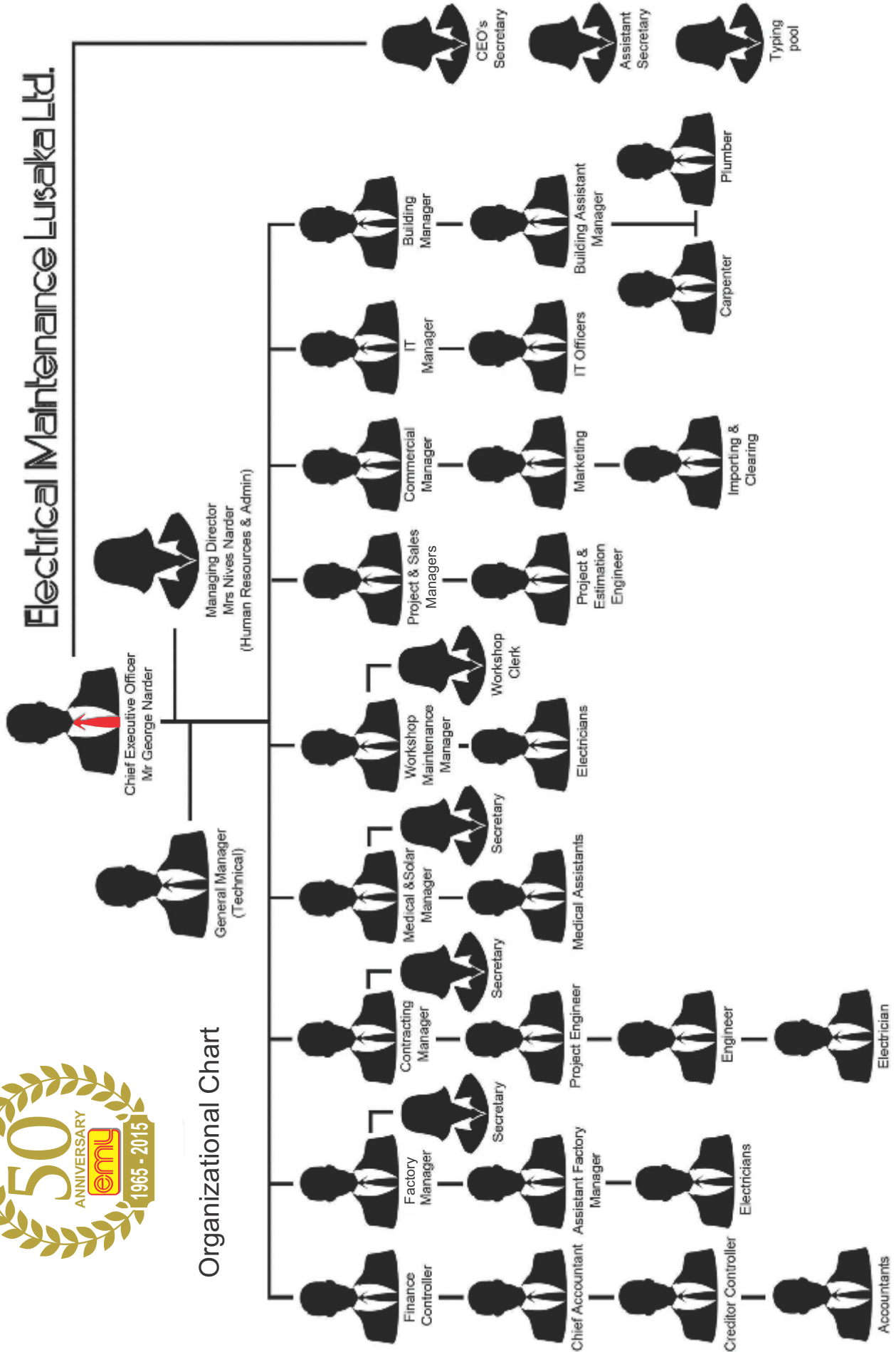
Silent back-up power for life-support equipment at CFB







# Electrical Maintenance Lusaka Ltd.



Electrical Maintenance Lusaka Ltd is a privately owned company with over 50 years' experience of doing business in Zambia. It is currently the most diversified electric and electronic engineering company in the country.

The company's main business continues to be manufacturing, construction, wholesale and includes solar, healthcare, control and instrumentation, motor repair and rewinding, light and panel manufacture and Power Factor Control solutions on both MV and LV.

EML has a strong focus on continuous improvement, offering innovative energy saving solutions (such as LED) and quality service to the client. The company's success is reflected in the growth of its client base, business expansion and stability in the market.

### AUTHORIZED DISTRIBUTORS OF :



**TEL:**  
+260 211 227824 - 7  
+260 211 235366

**Mobile:**  
+260 977 641010  
+260 967 731975



**TEL:**  
+260 212 228077  
+260 212 228843

**Mobile:**  
+260 974 228077  
+260 955 228077

[www.eml-eis.com](http://www.eml-eis.com)



Plot 195, Luanshya Road, East End  
Off Great North Road  
P.O. Box 31189, Lusaka, 10101, Zambia



Plot 1023, Eshowe Road,  
P.O. Box 22612, Kitwe, 10101, Zambia